

EGYPTIAN LOOFAH Vegetal exfoliating

Nature for Body Care



Description

The Loofah is a vegetable gourd Originally grown mostly in oriental countries. The dried fiber has exfoliating properties 100% natural Cosmetic application

Luffa exfoliator is presented as a powder made of particles which are very homogeneous in size. It allows an accurate and soft exfoliation.

Luffa Exfoliator is easy to process in cosmetics as the fibers remain stable and hard in any kind of products, even in though containing a large amount of water.

Chose the grade

3 different grades (particles sizes).

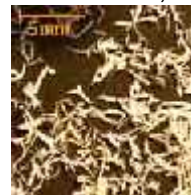
LUFFA 30

Fine grade
Cosmetics



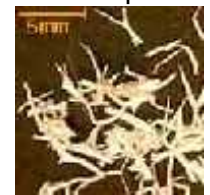
LUFFA 20

Medium grade
Cosmetics, Soaps



LUFFA 5

Long grade
Bar soaps



Loofah is an inedible fibrous gourd.

The inside is composed of highly resilient interwoven fibres.

None other compare to the soft, supple, expansive, durable

loofah recognized for its high exfoliating and absorbing qualities.



Natural Loofah ingredients

| | |
|---------------------|---|
| Presentation | : Poudre / Powder |
| Fragrance | : No |
| INCI (CEE) | : LUFFA CYLINDRICA FRUIT |
| INCI (US) - CTFA | : LUFFA CYLINDRICA FRUIT |
| POWDER CAS / EINECS | : 999999-99-4 / 310-127-6 |
| Microbiology | : <100 cfu/g |
| Shelf-life | : 24 months |
| Metalic particles | : guarantee free off ferous and non-ferrous |

After 9 months maturation, the vegetable is cropped, cleaned and dried. The result is a vegetable fiber that is used as an exfoliating agent.

This high quality product can be exfoliating agent into most cosmetics (body creams and milks, peelings and scrubs, soaps, shower gel, massage products, dry powder skin care products, etc.). incorporated as

